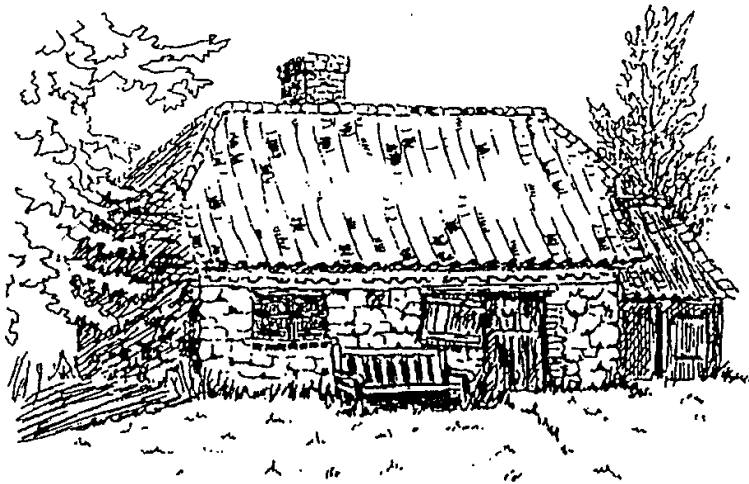


## EDITORIAL

# The Thriplow Journal



Published by The Thriplow Society

Vol. 34/2 Summer 2025

At last here is the Summer 2025 journal. Putting together a selection of articles that members will hopefully find interesting is not an easy task so I am extremely grateful to those members who have contributed to this issue.

The photographs in the item about the fire in 1964 at Cochranes Farm were taken by Ashley Larmouth who lived at Merrythought Cottage, 11 The Green. Ironically, Merrythought Cottage burnt down a few years later when the thatched roof caught fire due to an electrical fault in the overhead wires. His photographs were on glass slides which he loaned to David and me in the early 1970's after we had built, and moved into, our house so that we could get copies printed. The two cottages mentioned in the newspaper article that couldn't be saved were at 7 Lower Street where Richard & Jenny Taylor now live.

On page 5 there is an article about the 'Postbox of the Future'. Members living locally may have seen, or perhaps even used, the facilities offered by the new postbox in Fowlmere High Street. There are some people I can't help feeling sorry for. Firstly any philatelists who collect British stamps - bar code labels are not nearly as attractive! Secondly the 'yarn bombers' who, because of the solar panels, I guess won't be able to put their knitted or crocheted creations on top of the boxes. These ways make me smile so I'm hoping the knitters and crocheters will still find a way to continue to brighten up our villages.

Thriplow Society founder member Shirley has decided to take a break from the committee – we hope it is only a short break. The contribution Shirley has made to the Society over the years is immeasurable and we are delighted that she will continue as our archivist. Members who attended the meeting on 15<sup>th</sup> May will know that Shirley was presented with a garden centre gift voucher. Many thanks to all members who responded to the email by contributing to this gift and for not spilling the beans to Shirley beforehand. The existing committee had also agreed to offer Shirley life membership of the Thriplow Society which she was pleased to accept.

Many thanks to those who have paid their subscription of £15 per household. Subscriptions are important to the Society and help to pay for the production of the journals and speakers fees. There are still quite a few members who have not yet paid. If you are one of these and still wish to remain a member please let us have your subscription as soon as possible.

*Pat Easthope*

## Visitors from Canada

On 1st August an email was received from Michael Jakins, from Oakley, Bedfordshire, saying that on Sunday 3<sup>rd</sup> his second cousin from Vancouver, Canada would be visiting Thriplow and asked whether they could look inside the Smithy. David agreed to meet them. Michael had visited the Smithy a few times before with other Canadian relatives but had not been inside it since the 1980's. He said that this would be a "once in a lifetime" visit for his cousin Kurtis Leavins and Kurt's wife, Catherine and son, Brandon.

Their mutual great grandfather, John Edward Jakins, was initially an apprentice at Thriplow around 1890 and by 1902 he was working as a blacksmith in London. In 1905 he emigrated to Canada with his wife and eldest child who later came back to England and became Michaels' grandfather.



L-R Brandon, Kurtis, Catherine, Michael  
Photo: David Easthope

Michael asked if we had any record of John Edward Jakins' father-in-law, John Ward Faircloth, who lived in Thriplow most of his life (1838 – 1912) as a carpenter. Googling John Ward Faircloth revealed a list of Thriplow Baptisms from 1538 – 1950. The Faircloth name appears many times and there is also a Jakins on the list which was sent on to Michael together with our list of Blacksmiths.

Their visit lasted about an hour and Michael has emailed thanking David for his invaluable insight and saying that the visit meant a great deal to Kurt who was quite emotional afterwards.

Michael also says that all of the Faircloths in the baptismal list are in their family tree and that one of John Jakins' siblings had the Swan Pub in Fowlmere from 1911 onwards. He and Kurt are also confident that we can add John Edward Jakins to our blacksmiths list from 1892 and they believe that he was previously apprenticed to Benjamin Juniper during his tenure. Our list has been amended.

## THRIPLow SMITHY BLACKSMITHS

(information from various directories and family relatives)

### Year

1847	Elias Bateson
1851	Elias Bateson and Rt Bateson
1858	Robert Bateson
1864	Robert Bateson & William Lodge
1867	Robert Bateson
1869	David Young & William Lodge
1873-1876	David Young
1879-1892	Benjamin Juniper & John Edward Jakins (apprentice)
1892	John Edward Jakins
1896	Walter Thomas Skillings
1912-1915	Walter Thomas Skillings & Allan Skillings
1916	Ernest Smith
1919	Thomas Skillings & William Cato
1921-1922	William Cato
1922-1931	Thomas William Plumb
1961	Bill Spicer (the last blacksmith who regularly used the forge)

### Notes:

*There are some gaps in the dates as not all directories covered all years*

*Some blacksmiths travelled from nearby villages to use the forge*

*By 1963 the Smithy was no longer in use and it was donated to the village (Parish Council) by Mr Younger (who resided at Thriplow Bury) together with the sum of £100 for its upkeep.*

*In 1974 the Smithy was listed as an Historic Grade 2 Building. Varied restoration work has been carried out over time to maintain it. The Thriplow Society houses a collection of bygones in the Smithy and at Daffodil Weekend arranges for the forge to be used by a Farrier and Blacksmith.*

Smithy cleaning will take place on Saturday morning 23<sup>rd</sup> August starting at 10.30 am. Any help would be most welcome

## Join the Thriplow Society Committee!

- Help Shape Our Future
- Preserve Local History
- Build Community

The Thriplow Society is looking for **enthusiastic new committee members** to help guide our activities, plan events, and keep our wonderful society thriving.

### ◆ Why Join?

- ✓ Make a difference in **preserving local history**
- ✓ Help plan **engaging talks & activities**
- ✓ Connect with **like-minded people**
- ✓ Contribute **your skills & ideas** to the community

### 🌿 What's Involved?

No specialist knowledge required—just a passion for Thriplow and its heritage! Roles can be **flexible**, and any amount of help is greatly valued. Whether it's supporting events, handling communications, or shaping future projects, **there's a place for you!**

### 📍 Interested? Get in Touch!

Drop by our next meeting or email us at [david@easthope.email](mailto:david@easthope.email) to learn more. Join us and be part of something special!

## 'Postbox of the future'

Royal Mail have unveiled its solar panelled "Postbox of the future" 5 boxes are being trialled across Hertfordshire and Cambridgeshire and Fowlmere has one of them. The boxes have a barcode reader and a large hatch that can take parcels bigger than letterbox size.

Customers can scan their packages using the barcode scanner and can then use the Royal Mail app to request proof of posting. This is a new feature introduced so that small, barcoded parcels can be posted in a postbox



Letters, etc. with postage stamps rather than barcodes can be posted in the top slot.

Royal Mail say that letter volumes are declining but parcel post is booming as more people are choosing to buy and sell on line.

This has led to many parcels being returned and the return slips provided by sellers are usually barcoded. The new postboxes are designed to give more choice and convenience for customers who can now drop their parcels in any postbox where they will fit – all that is needed is a label with a barcode.



Pat Easthope

Photo's: Royal Mail

## Thriplow and Heathfield Neighbourhood Plan 2024 TO 2041

At long last the Neighbourhood Plan for the parish of Thriplow and Heathfield has finally been voted on by residents, accepted and finally adopted by the District Council on 17<sup>th</sup> July. When reviewing planning applications in the parish the District Council will now consider the aims and objectives of our Neighbourhood Plan in their deliberations. The whole process started back in 2017 when the parish council agreed that a Neighbourhood Plan for the whole parish should be produced. A group of interested people from across the parish got together to discuss how the plan might be moved forwards. They looked at plans prepared by other parishes, attended meetings, consulted with residents and stakeholder and took advice from SCDC and ACRE and eventually a small Neighbourhood Plan committee was formed led by David Easthope. Before Covid intervened permission had been obtained from the District Council for the Neighbourhood Plan to include the whole parish, i.e.. both Thriplow village and Heathfield. Due to work and other village commitments David could no longer give as much time to the plan as he would have wished and village resident and local architect Philippa MacGarry kindly agreed to take the lead.

Financial help was provided by the Localism Act which enabled the team to get expert help from Cambridgeshire ACRE. They recommended the services of Rachel Hogger of Modicum Planning and the expert help provided guided the team through the whole process.

Records of all the consultation stages were vital to the success in evaluating and concluding results and moving the plan on. Other parish residents gave tremendous support in starting consultations, analysing results and presenting the results to all concerned at the different stages of consultation. Exhibitions were held and the parish council held many extra meetings to consider all of the comments made.

Finally the plan was complete. It was displayed for a week in order to give all residents the opportunity to see the proposed final document. The District Council then arranged a referendum and the resulting vote was heavily in favour of the Neighbourhood Plan.

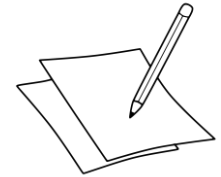
At a full District Council meeting on 17<sup>th</sup> July the plan was officially adopted

Parish Council Chairman Jane Gough has said "Creating a Neighbourhood Plan and having it adopted is not easy. A lot of work has been done by Philippa MacGarry and her helpers, especially Kit Jackson, Kerstin Rivett and Parish Councillor David Easthope, together with others. Everyone involved has helped to achieve a result which is for the benefit of this parish in the future."

*David Easthope*

## 100 YEARS AGO

Thanks to Shirley for the extract below from the archives



### Thriplow School Records

**June 16, 1925:** Eight children away all day to go on an excursion to the seaside.

**June 18, 1925:** Dentist visited in the morning for treatment. Holiday in the afternoon for good attendance.

**July 21, 1925;** A wet morning, 8 children from The Heath absent all day, though fine in the afternoon.

Average attendance for the week, 75.1. Holiday on Friday afternoon for good attendance.

**July 31, 1925:** School closed for Harvest Holiday, 6 weeks.



# Gray, Swann & Cook

1967

P. C. GRAY, M.A., F.R.I.C.S., F.A.I. I. J. SWANN, F.R.I.C.S., F.A.I. A. R. COOK, F.R.I.C.S., F.A.I. C. J. DODSON, A.R.I.C.S., A.A.I.  
 CHARTERED SURVEYORS - CHARTERED AUCTIONEERS & ESTATE AGENTS  
 29, ST. ANDREW'S STREET - CAMBRIDGE - TEL: 51616

FOR SALE - FREEHOLD  
 76358

WITH VACANT POSSESSION OF  
ONE COTTAGE; THE OTHER  
BEING LET.

A pair of cottages at  
 Nos. 32 & 34 LOWER STREET,  
 THRIPLow, CAMBS.

THRIPLow is a small village 8 miles South of Cambridge and 6 miles North East of Royston centred around its Village Green.

THE COTTAGES, one vacant and one let, occupy a corner site in Lower Street, close to the entrance gates to "Thriplow Place", with an area of about 3/10 of an acre.

CONSTRUCTION: The basic construction is believed to be of clay-bat on a brick plinth with a slated roof and a rather more modern extension with an asphalt roof projecting to one side of the vacant cottage.

COTTAGE 34 - With Vacant Possession. In quite good decorative order internally.  
 Rateable Value: £19  
 (rates 12/- in £ for current year.)

Accommodation

Ground Floor

- Side Entrance Lobby
- Pantry Cupboard
- Elsan Closet
- Bathroom with bath only
- Scullery: about 12' x 7' with sink and pump from well. Electric cooker point.
- Front Living Room: about 11'2" x 11'10" with a tiled fireplace, electric power and light points.

First Floor

- Lobby Landing
- Front Bedroom (1): about 11'9" x 11'3" with electric power and light point. Small box room off.
- Back Bedroom (2): about 11'10" max. x 7'1".

Outside - Garden, unfenced from No. 32.

COTTAGE 32 Let on a controlled tenancy to Mr. and Mrs. Fuller who have occupied the cottage for the past 39 years. They pay a rent of 3/6d per week, inclusive of rates. Rateable Value: £14 (rates 12/- in £ for current year - South Cambs. R.D.C.)

The accommodation comprises a scullery and living room with two bedrooms above.

SERVICES: Main Electricity, Water from well.

These particulars should not be deemed to form part of any contract. They are issued on the understanding that all negotiations are made through GRAY, SWANN & COOK. Although every possible care is taken in the preparation of these particulars the Agents are not responsible for any errors or inaccuracies therein.

76358

2

THE SALE is to include both cottages, No. 34 with Vacant Possession and No. 32 being subject to the tenancy of Mr. and Mrs. Fuller.

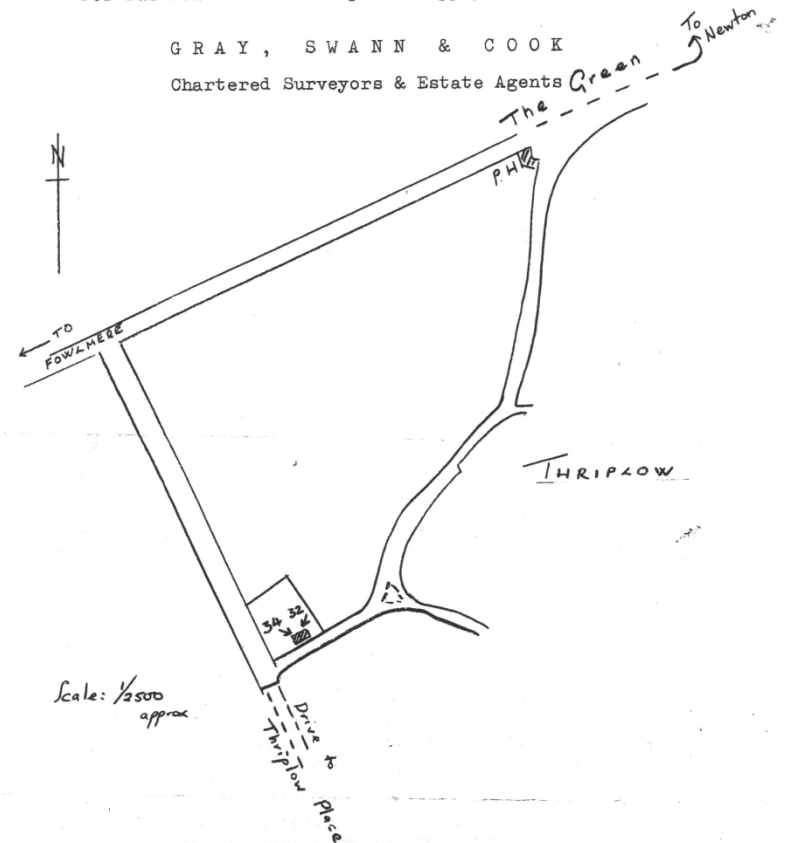
£1,600

OFFERS IN THE REGION OF £1,650 are invited.

For further information please apply to the Sole Agents,

GRAY, SWANN & COOK

Chartered Surveyors & Estate Agents



Many thanks to Joanna Barker for this item

## More News from John & Sue Turner

Here is an extract from an email received from John & Sue at the end of May.

Hi Pat & David

We are in our motorhome, left Tasmania on the evening ferry of May 2nd. Three kids to visit on the mainland; one in the Dandenong Ranges in eastern Melbourne, number 2 lives up a narrow alpine valley 25km from Tumut, NSW, and the third is in Brisbane - when he is home. Last week he was at our place in Tassy! His job takes him all over Aus and many parts of the world to mines where he trains employees how to use the scanners that his company markets-look up Emersent if you are curious.

Our 4th off-spring resides about 12 minutes from us in Tassy, so she missed out on a visit.

The magnitude of this country would amaze you. We have driven from Geelong, south of Melbourne, to Tanya's place in Belgrave, Melbourne, then through back country up to Central Vic to the Hume highway then to Tumut, then worked our way west via Wagga Wagga, Junee and many others to Port Augusta in SA then across the Nullarbor to Norseman, covering 3,896.5 km so far. I have a picture somewhere showing a map of Europe overlaid on a map of Aus. If I can find it I'll send you a copy. We've come from way south of Greece, north to about Serbia, then west to somewhere around Southern Spain.

Thanks for reading this - hope I didn't bore you both. Now to go and try to work out what is wrong with the water tank in this jallopy. The gauge says it is half full, we both reckon it's nearly empty, and it won't take any more water through the filler. Last three days from the east to here we've done without showers, as there is absolutely no water available - the countryside is very barren and dry, and we were trying to preserve what is left for drinking and cooking.

Cheers and thanks again

John and Sue

*Thankfully John managed to find the map which puts in perspective just how vast Australia is.*



## RECENT MEETINGS

**May 15<sup>th</sup>** – Alan Osborne’s illustrated talk was about “The Dark Lady of DNA, Rosalind Franklin” During her lifetime Rosalind did not get the full credit for her discoveries , that came later. Alan has several interesting talks and it is hoped he will come back with another talk next year.

**June 28<sup>th</sup>** Tour of Fowlmere Church & “Remembered in Stained Glass”

Barry Jones led us on a tour of the Church, starting at the front door which is believed to be the original door to the church and to date from the 13<sup>th</sup> century. We continued round the church with Barry pointing out the many items of interest.



We then had a chance to rest our feet while Ivorna Moss told us about the magnificent stained glass window. It was dedicated to William & Susan Metcalfe by their 7 surviving children in 1860. The Rev. Metcalfe was Rector of ‘Foulmire’ for 36 years from 1814 until his death in 1850. The window depicts 36 apostles, prophets and martyrs including one woman, St Catherine. Several of us bought a copy of the excellent guide book written by Society member Sir John Coles, a lovely keepsake of a very enjoyable afternoon.

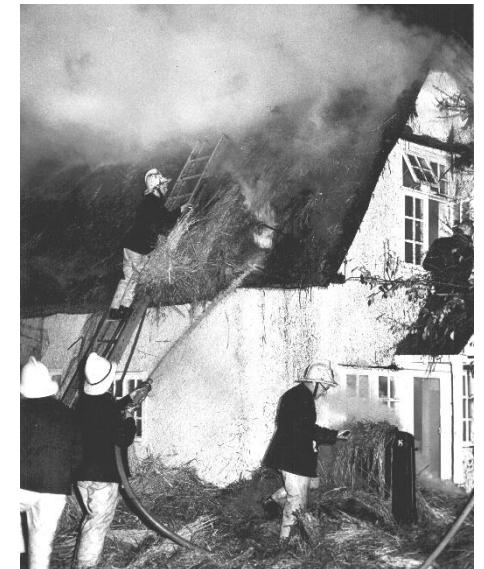
*Photo by kind permission of Ann Robertson*

**July 17<sup>th</sup>** Richard Taylor “Thriplow Cottages & the rebuilding of Wren Cottage” Everyone at this very well attended meeting enjoyed another excellent talk by one of our members.



Richard started by showing us illustrations of various styles of cottages before moving on to tell us more about the picturesque Wren Cottage with its thatched roof which he had bought with the intention of refurbishing it before moving in.

He soon realised that far more work was involved than he had first thought but nevertheless he started the work. Before he had got very far the cottage caught fire and the damage was so bad that a complete refurbishment was needed. This gave Richard the opportunity to completely reorganise the cottage. Undaunted he carried on and in the end the whole project took him 4 years to complete during which time he had met and married Jenny who also helped with the renovation.



*Photo's kindly supplied by Richard Taylor*

**Disastrous fire at Thriplow**



Fire broke out in Cochranes Farm, Lower Street on Sunday last about mid-day, and with plenty of inflammable material in the shape of bailed straw and sacks of wheat the whole farm rapidly became a raging furnace and much farm machinery was damaged. Unhappily the wind fanned the flames onto two thatched cottages on the other side of Lower Street and these were almost completely destroyed.

Fortunately, it being Sunday, manpower was immediately available and fire engines arrived to deal with the blaze but they were too late to save the two cottages. However, the occupant of one was away from home and from the other Mr. and Mrs. J. Carter were got out safely together with their pet canary, and other willing helpers rescued the whole of the contents of both cottages.



Mrs. H. Moule's giant television aerial which doubled up under the intense heat. Lord Walston, the owner of the farm, quickly arrived from his Newton home and did everything in his power to see that those affected personally were made as comfortable as possible



The firemen praised the helpers who cleared both cottages of their contents within ten minutes. The thatched roof of another cottage, the home of Mr. & Mrs. E. Andrews, also caught fire but firemen dealt with this successfully. Luckily, the houses bordering the farm had tiled roofing and beyond blistered paintwork and shattered window panes no serious damage seems to have been done, except to

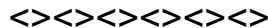
Villagers generally will be pleased to know that Mr. and Mrs. J. Carter are guests at the home of Mr. and Mrs. V. Freeman until they are able to take up residence in a house in Middle Street which was offered them by Lord Walston. Firemen kept watch over the smouldering ruins till close on midnight and till late in the evening villagers were still busy clearing up debris from the ruined homes

## GLEANINGS

**CONDOLENCES** We were very sorry to learn of the death of Jean Tomlinson on 14<sup>th</sup> August. Jean joined the Thriplow Society shortly after moving into Middle Street several years ago and was a much valued member of the committee from 2010 – 2023. Sincere condolences are offered to Jean's family.



*When a loved one becomes a  
memory  
the memory becomes a  
treasure*



## THANKS

After our fascinating tour of Fowlmere Parish Church in June, Iverna Moss gave Shirley two booklets for the Thriplow Society Archives. "Remembered in Stained Glass" by Iverna and "Welcome to St Mary's, Fowlmere" by Sir John Coles.

*Shirley also sent the information and photograph below.*



It is hoped to have a permanent display in Thriplow Church of residents who were killed in the two world wars including those who died from their wounds and are buried in the church graveyard.

This war grave at Thriplow commemorates Arthur Edward Ison who died of his wounds in St Michael's Hospital, Brampton Cumberland, on 15.10.1917 age 36 (although the grave says age 37). He lived in Church Street.

